

# This is Art Club! Repoussé

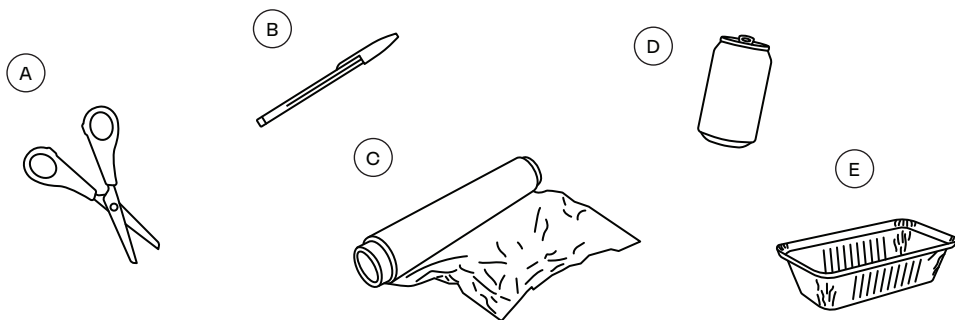
Lesson by Shane McIntyre  
With a Special Thanks to  
NCAD, School of Education

## What you'll need!

- A. Scissors
- B. Pen
- C. Tin Foil
- D. Recycled Cans
- E. Foil Take Away Containers

# A few simple steps Repoussé

Check out our "La Tené" demo  
doc to see some examples  
of the motifs mentioned below.



## 1 Gather some metal

La Tené motifs are symbols or small pictures the people in the Iron age used in their own work.

Collect three different types of metal such as tin foil, foil take away containers and recycled cans. Carefully cut out a square section of the foil to use for the La Tené motifs.

## 2 Repoussé time

The word 'Repoussé' is a French word which means 'Push out' in English.

Relief is when a 3D surface is created from a flat surface.

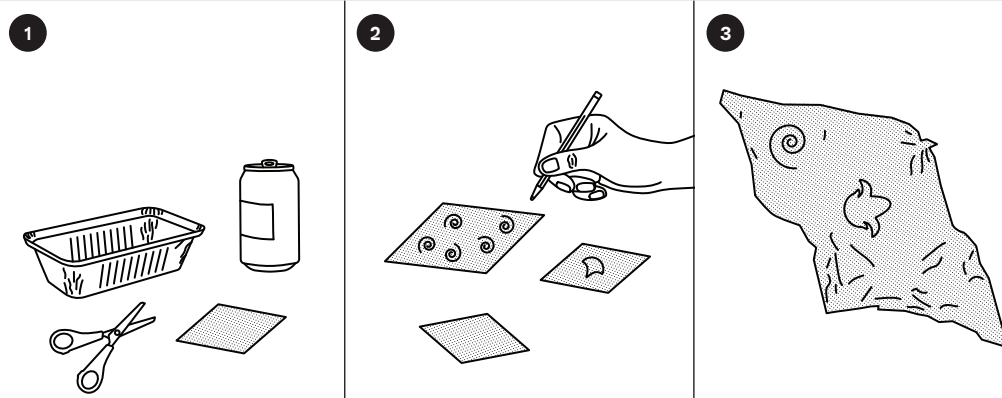
For the repoussé technique, use a pen or a sharp object to gently create some La Tené motifs by drawing on the different types of foils.

The repoussé technique involves pressing or hammering your chosen design onto metal. This pushes out the design from the surface on the opposite side. When you flip the metal onto the opposite side you will see your design in the relief (sticking out).

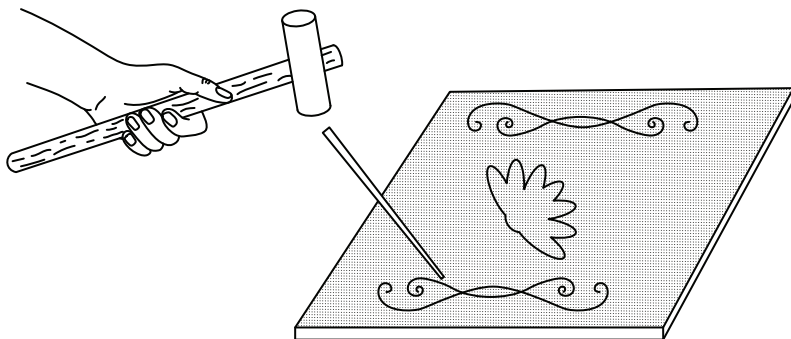
## 3 Choose your fave

Many of these ancient artefacts that have use of the Repoussé technique feature in the National Museum of Ireland in Dublin.

Once you have experimented on your three different types of foil, you will be able to see what one works the best for your head piece.



# Other techniques For metalworking



Chasing is the opposite of repoussé. It involves hammering around your design to make it stick out in the relief.

Incision includes the use of a scribe (sharp pencil shaped metal tool) to decorate metal. The technique involves scraping your design onto the metals surface.